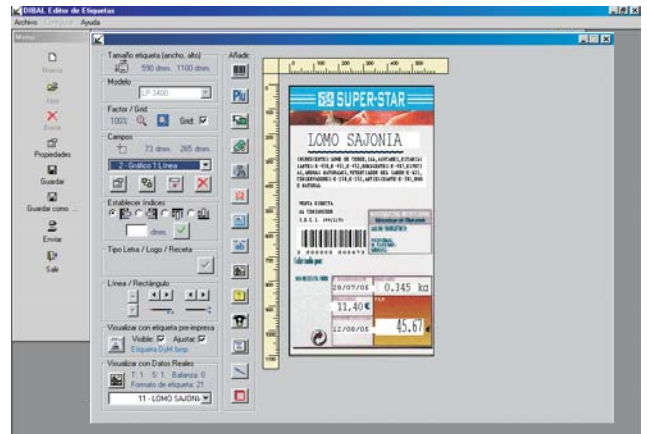


### DESCRIPTION

- Graphic "WYSIWYG" labels editor.
- Data saving in PC to be used later on.
- On-line sending of the label design to the systems.
- Sending of logos to the systems.
- Preview of the label with real data.

### OPERATING SYSTEMS

- Windows 98.
- Windows NT.
- Windows 2000.
- Windows XP professional.



### VERSIONS AND LICENCES

- Demo\* version that can be downloaded from the customers area of Dibal website (access code is required).
- Demo\* version in CD-Rom.
- CD-Rom 1 licence.
- CD-Rom 5 licences.
- CD-Rom yearly multi-licence.

Each licence allows the installation in a single PC and to act over an unlimited number of systems.

\*Demo versions will not allow to save the design of labels or send it to the systems

### APT FOR

- All Dibal equipment with communications (Serial, UDP, TCP), except VD-300 indicators.

### CONTENT

- DLD software and Basic RMS software.
- User's manual.
- Examples of labels and logos.
- Dongle for parallel or USB port.

### EXPORT PRICE LIST - January 2006

Taxes included

DESCRIPTION	DONGLE	No. OF LICENCES	CODE	PRICE
<b>DLD</b>	<b>PARALLEL PORT</b>	<b>1</b>	<b>40L0P1</b>	<b>Upon request</b>
	<b>USB PORT</b>	<b>1</b>	<b>40LOU1</b>	<b>Upon request</b>

### OPTIONAL SERVICES

**Installation, configuration, training, consultancy or development (price per hour\*)**

**Upon request**

\*Journeys and expense allowances not included.

**UPDATES AND SUPPORT:** Any of the licences (1, 5 or multi-licence) will allow accessing the updates and telephone support during 1 YEAR. For the multi-licence, the customer will be allowed to an unlimited number of installations during that very period.